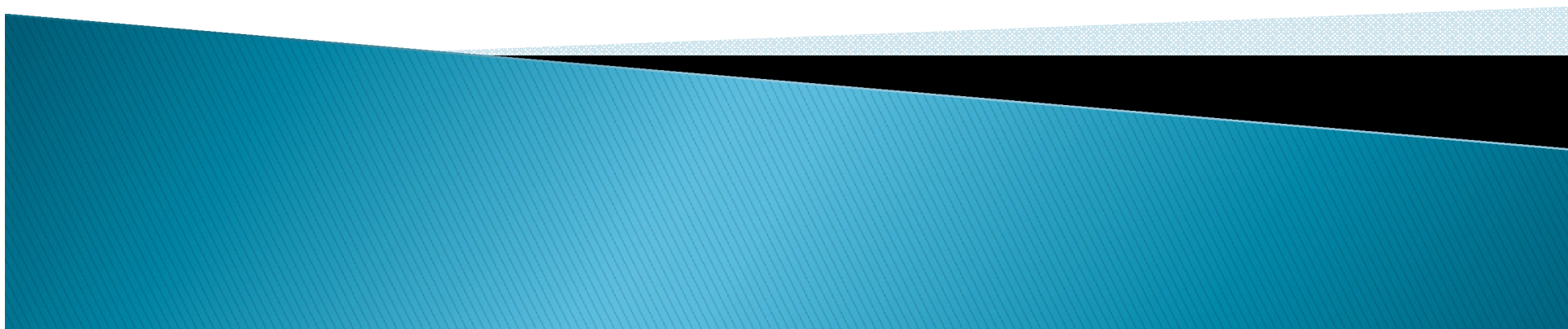
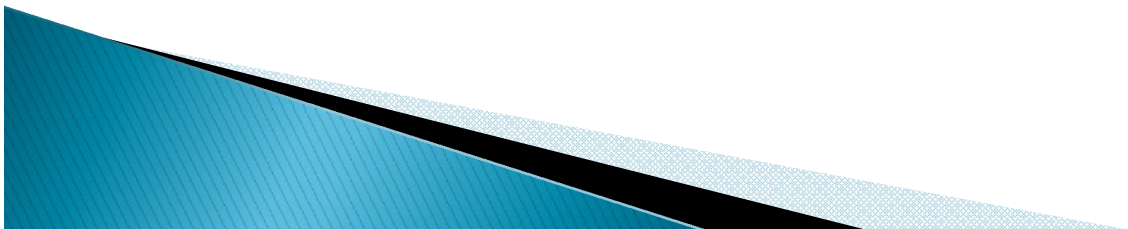


NIPPOLOG 1.0.34



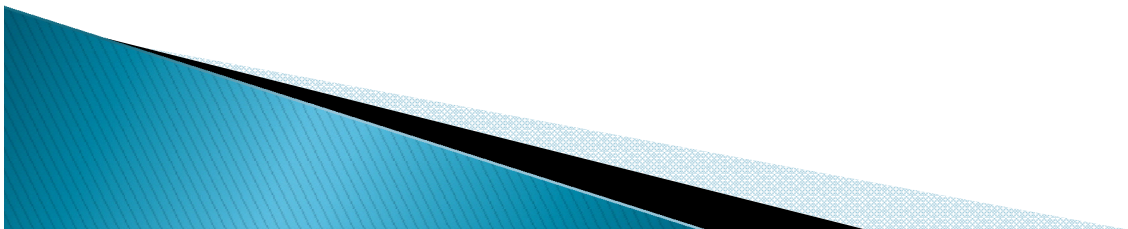
INTRODUCTION

- ▶ Nippolog Software
 - Data logging in PC.
 - Generating records. (printouts, excel sheet)



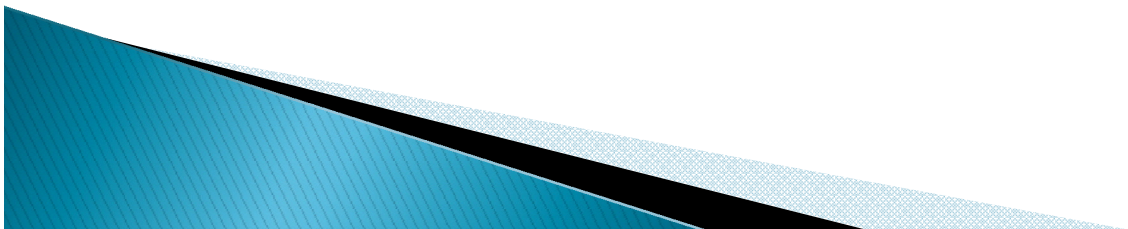
FEATURES

- ▶ Maximum 64 channels can be read in software.
- ▶ Supports MODBUS Protocol for all baud rates.
- ▶ Data can be viewed in tabular as well as graphical form.
- ▶ Programmable Baud rate.
- ▶ Multiple users can be created.
- ▶ Password protection for security purpose.



SPECIFICATIONS

- ▶ Nippolog Software
 - Nippolog Designer: Projects can be created and customized using designer.
 - Nippolog Scanner: Projects created in designer are viewed in scanner for data logging.



NIPPOLOG DESIGNER:

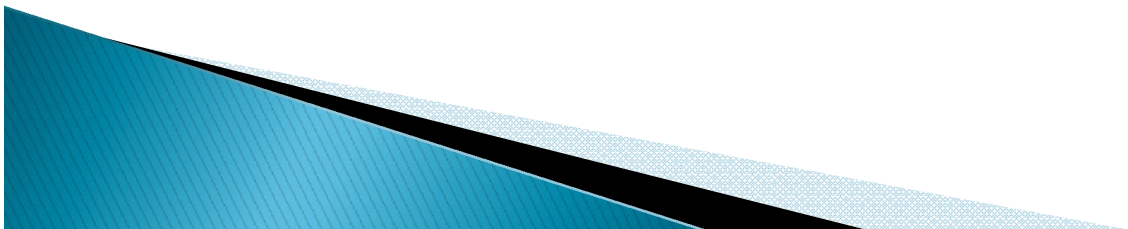


NIPPOLOG SCANNER:



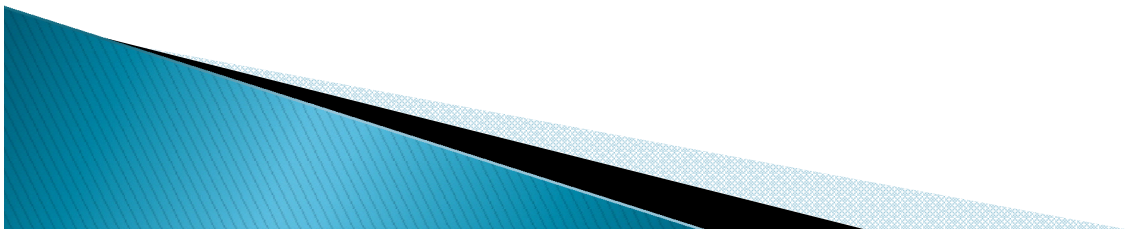
DESIGNER

- ▶ Communication:
 - COMM Port selection and COMM settings
 - Slave assignment to communication port
 - Tags of each slave to be assigned
- ▶ Display:
 - Tags display format
 - Colour of Tags viewed in Scanner

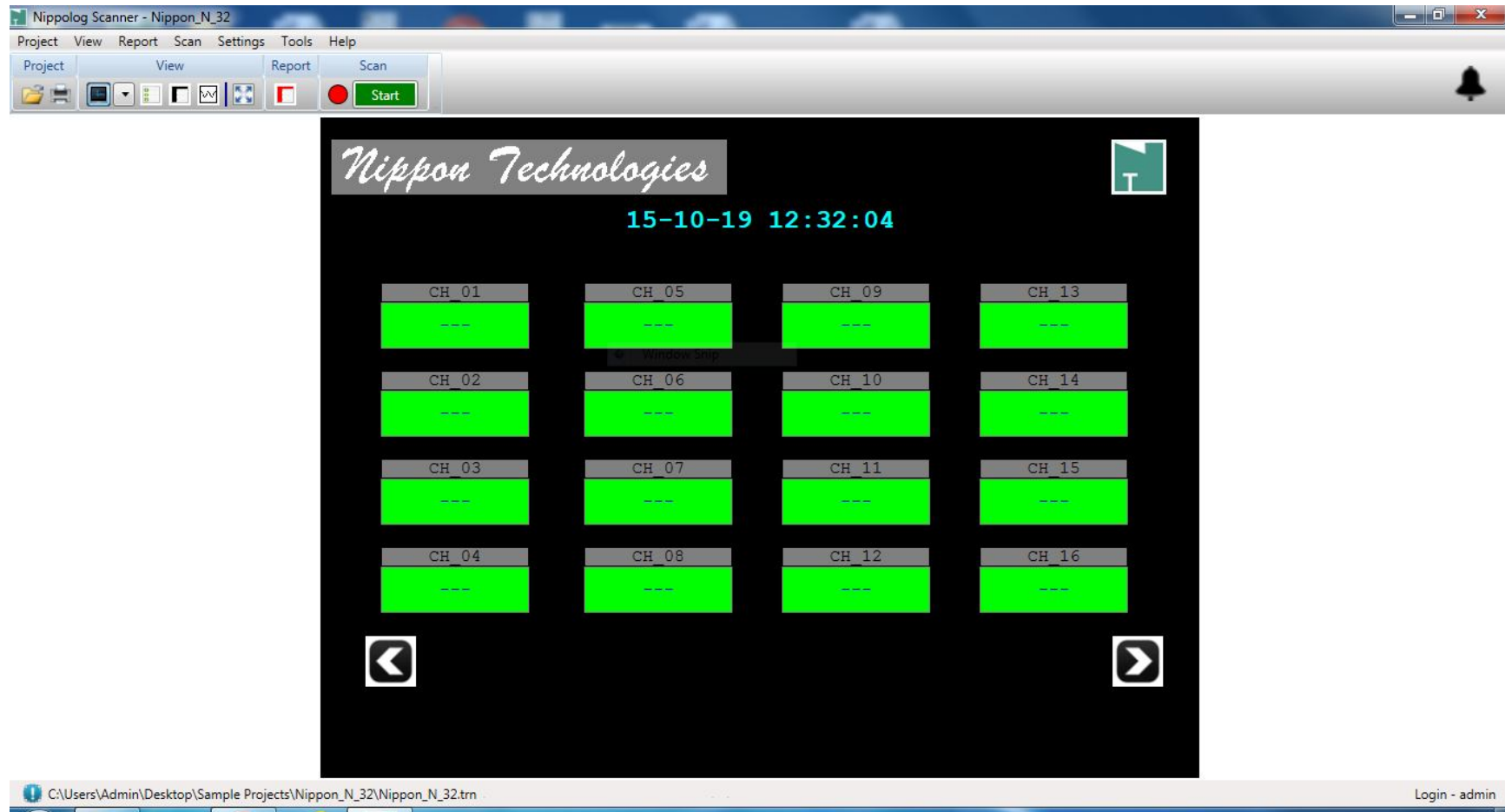


SCANNER

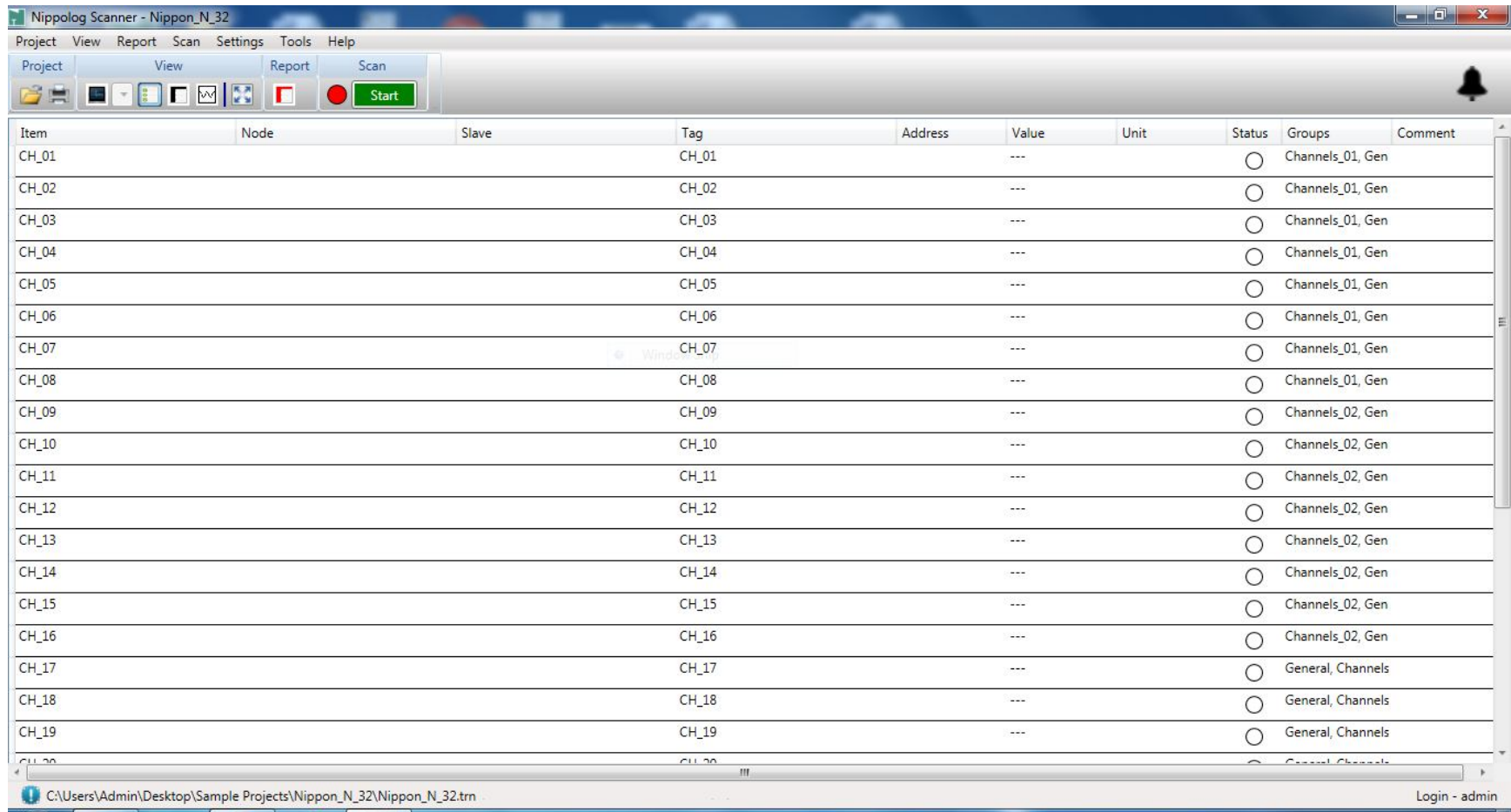
- ▶ Project Display
- ▶ Data scanning interval (Adjustable scan rate)
- ▶ Online data in screen, list, grid & chart view.
- ▶ Data backup file generated as per the interval set.
- ▶ Can create multiple users.
- ▶ Data records in printouts and excel.



SCREEN VIEW:



LIST VIEW:



The screenshot shows the Nippolog Scanner - Nippon_N_32 application window. The interface includes a menu bar (Project, View, Report, Scan, Settings, Tools, Help) and a toolbar with icons for Project, View, Report, Scan, and a Start button. The main area displays a table with the following columns: Item, Node, Slave, Tag, Address, Value, Unit, Status, Groups, and Comment. The table lists 20 channels (CH_01 to CH_20). Channels CH_01 through CH_16 are grouped under 'Channels_01, Gen' and 'Channels_02, Gen' respectively. Channels CH_17 through CH_19 are grouped under 'General, Channels'. The status for all channels is indicated by an empty circle. The bottom status bar shows the file path 'C:\Users\Admin\Desktop\Sample Projects\Nippon_N_32\Nippon_N_32.trn' and the user 'Login - admin'.

Item	Node	Slave	Tag	Address	Value	Unit	Status	Groups	Comment
CH_01			CH_01		---		<input type="radio"/>	Channels_01, Gen	
CH_02			CH_02		---		<input type="radio"/>	Channels_01, Gen	
CH_03			CH_03		---		<input type="radio"/>	Channels_01, Gen	
CH_04			CH_04		---		<input type="radio"/>	Channels_01, Gen	
CH_05			CH_05		---		<input type="radio"/>	Channels_01, Gen	
CH_06			CH_06		---		<input type="radio"/>	Channels_01, Gen	
CH_07			CH_07		---		<input type="radio"/>	Channels_01, Gen	
CH_08			CH_08		---		<input type="radio"/>	Channels_01, Gen	
CH_09			CH_09		---		<input type="radio"/>	Channels_02, Gen	
CH_10			CH_10		---		<input type="radio"/>	Channels_02, Gen	
CH_11			CH_11		---		<input type="radio"/>	Channels_02, Gen	
CH_12			CH_12		---		<input type="radio"/>	Channels_02, Gen	
CH_13			CH_13		---		<input type="radio"/>	Channels_02, Gen	
CH_14			CH_14		---		<input type="radio"/>	Channels_02, Gen	
CH_15			CH_15		---		<input type="radio"/>	Channels_02, Gen	
CH_16			CH_16		---		<input type="radio"/>	Channels_02, Gen	
CH_17			CH_17		---		<input type="radio"/>	General, Channels	
CH_18			CH_18		---		<input type="radio"/>	General, Channels	
CH_19			CH_19		---		<input type="radio"/>	General, Channels	
CH_20			CH_20		---		<input type="radio"/>	General, Channels	

GRID VIEW:

Nippolog Scanner - Nippon_N_32

Project View Report Scan Settings Tools Help

Project View Report Scan Time Span

13 Sep 2019, 11:30:54 - 13 Sep 2019, 12:30:54

General

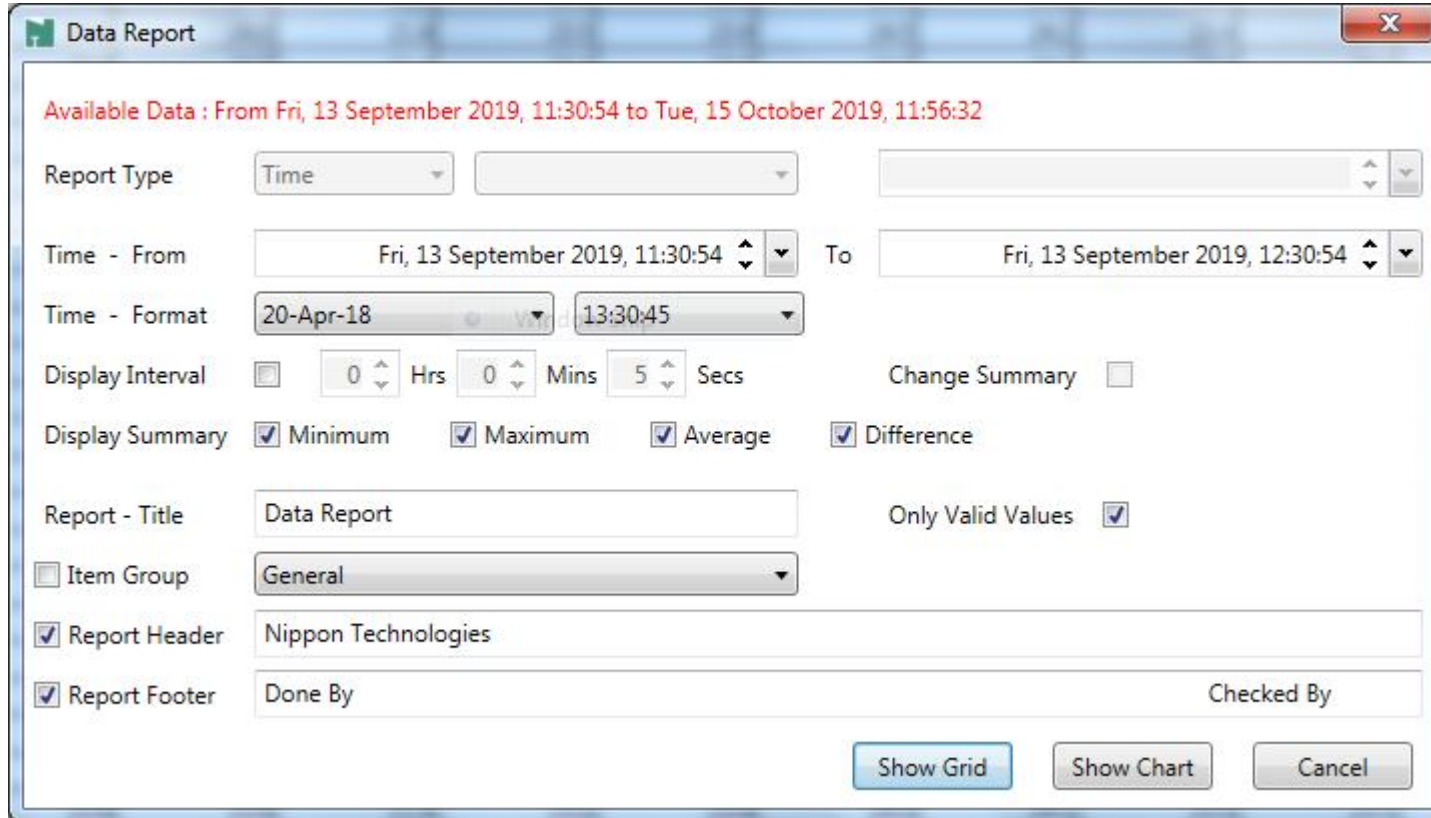
Time	CH_01	CH_02	CH_03	CH_04	CH_05	CH_06	CH_07	CH_08	CH_09	CH_10	CH_11	CH_12	CH_13	CH_14
13-Sep-19, 12:27:00	23.8	23.8	21.2	23.3	23.8	24.5	24.1	23.4	23.2	23.7	23.5	SKIP	SKIP	
13-Sep-19, 12:27:10	23.8	23.8	21.2	23.3	23.8	24.5	24.1	23.3	23.1	23.7	23.5	SKIP	SKIP	
13-Sep-19, 12:27:20	23.8	23.8	21.2	23.3	23.8	24.5	24.1	23.3	23.1	23.7	23.5	SKIP	SKIP	
13-Sep-19, 12:27:30	23.8	23.8	21.2	23.3	23.8	24.5	24.1	23.3	23.1	23.7	23.5	SKIP	SKIP	
13-Sep-19, 12:27:40	23.8	23.8	21.3	23.3	23.8	24.5	24.1	23.3	23.1	23.7	23.5	SKIP	SKIP	
13-Sep-19, 12:27:50	23.8	23.8	21.3	23.3	23.8	24.5	24.1	23.3	23.1	23.7	23.4	SKIP	SKIP	
13-Sep-19, 12:28:00	23.8	23.8	21.4	23.3	23.8	24.5	24.1	23.4	23.2	23.6	23.5	SKIP	SKIP	
13-Sep-19, 12:28:10	23.8	23.8	21.4	23.3	23.8	24.5	24.1	23.4	23.2	23.6	23.5	SKIP	SKIP	
13-Sep-19, 12:28:20	23.8	23.8	21.4	23.3	23.8	24.5	24.1	23.4	23.2	23.6	23.4	SKIP	SKIP	
13-Sep-19, 12:28:30	23.8	23.8	21.3	23.3	23.8	24.5	24.1	23.4	23.2	23.6	23.4	SKIP	SKIP	
13-Sep-19, 12:28:40	23.8	23.8	21.3	23.2	23.7	24.5	24.1	23.3	23.2	23.6	23.4	SKIP	SKIP	
13-Sep-19, 12:28:50	23.8	23.8	21.4	23.2	23.7	24.5	24.1	23.3	23.2	23.6	23.4	SKIP	SKIP	
13-Sep-19, 12:29:00	23.8	23.8	21.4	23.2	23.8	24.5	24.1	23.3	23.1	23.6	23.4	SKIP	SKIP	
13-Sep-19, 12:29:10	23.8	23.8	21.3	23.2	23.8	24.5	24.1	23.3	23.1	23.6	23.4	SKIP	SKIP	
13-Sep-19, 12:29:20	23.8	23.8	21.3	23.2	23.8	24.5	24.1	23.3	23.1	23.6	23.4	SKIP	SKIP	
13-Sep-19, 12:29:30	23.8	23.8	21.4	23.2	23.8	24.5	24.1	23.3	23.1	23.6	23.4	SKIP	SKIP	
13-Sep-19, 12:29:40	23.8	23.8	21.4	23.2	23.8	24.5	24.1	23.3	23.1	23.6	23.4	SKIP	SKIP	
13-Sep-19, 12:29:50	23.8	23.8	21.4	23.2	23.8	24.5	24.1	23.3	23.1	23.6	23.4	SKIP	SKIP	
13-Sep-19, 12:30:00	23.8	23.8	21.4	23.2	23.8	24.5	24.1	23.3	23.1	23.6	23.4	SKIP	SKIP	
13-Sep-19, 12:30:10	23.7	23.8	21.1	23.2	23.7	24.4	24.0	23.3	23.1	23.6	23.4	SKIP	SKIP	
13-Sep-19, 12:30:20	23.7	23.8	21.1	23.2	23.7	24.4	24.0	23.3	23.1	23.6	23.4	SKIP	SKIP	
13-Sep-19, 12:30:30	23.7	23.7	21.1	23.2	23.7	24.4	24.0	23.3	23.1	23.5	23.4	SKIP	SKIP	
13-Sep-19, 12:30:40	23.7	23.7	21.1	23.2	23.7	24.4	24.0	23.3	23.1	23.5	23.3	SKIP	SKIP	
13-Sep-19, 12:30:50	23.7	23.7	21.0	23.1	23.7	24.4	24.0	23.3	23.1	23.5	23.3	SKIP	SKIP	
Minimum	-50.0	23.7	21.0	22.8	23.1	24.4	23.7	22.9	22.7	23.5	23.3			
Maximum														
Average	31.8	69.0	66.8	68.4	68.7	69.4	69.0	68.5	68.3	60.9	68.7	1999.9	1999.9	
Difference	2049.8	1976.2	1978.9	1977.1	1976.8	1975.5	1976.2	1977.0	1977.2	1976.3	1976.6	0.0	0.0	

C:\Users\Admin\Desktop\Sample Projects\Nippon_N_32\Nippon_N_32.tn Login - admin

CHART VIEW:



REPORT SETTINGS:



Data Report

Available Data : From Fri, 13 September 2019, 11:30:54 to Tue, 15 October 2019, 11:56:32

Report Type: Time

Time - From: Fri, 13 September 2019, 11:30:54 To: Fri, 13 September 2019, 12:30:54

Time - Format: 20-Apr-18 13:30:45

Display Interval: ☐ 0 Hrs 0 Mins 5 Secs Change Summary ☐

Display Summary: ☒ Minimum ☒ Maximum ☒ Average ☒ Difference

Report - Title: Data Report Only Valid Values ☒

☐ Item Group: General

☒ Report Header: Nippon Technologies

☒ Report Footer: Done By Checked By

Show Grid Show Chart Cancel

GRID VIEW REPORT

Nippon Technologies

Data Report



Time	CH_01	CH_02	CH_03	CH_04	CH_05	CH_06	CH_07	CH_08	CH_09	CH_10	CH_11	CH_12	CH_13	CH_14	CH_15	CH_16
12-Jul-16, 17:17:35	25.3	26.3	25.7	23.3	25.4	25.7	24.9	24.6	25.4	25.3	OPEN	OPEN	OPEN	OPEN	OPEN	OPEN
12-Jul-16, 17:22:35	24.7	25.6	25.6	22.8	25.0	25.3	24.5	24.2	24.6	24.9	OPEN	OPEN	OPEN	OPEN	OPEN	OPEN
12-Jul-16, 17:27:35	24.4	25.4	24.5	22.3	24.5	25.0	24.1	23.8	24.4	24.6	OPEN	OPEN	OPEN	OPEN	OPEN	OPEN
12-Jul-16, 17:32:35	24.0	25.1	24.2	21.9	24.1	24.7	23.7	23.4	24.2	24.2	OPEN	OPEN	OPEN	OPEN	OPEN	OPEN
12-Jul-16, 17:37:35	23.7	24.8	23.6	21.7	23.8	24.5	23.5	23.1	23.9	24.0	OPEN	OPEN	OPEN	OPEN	OPEN	OPEN
12-Jul-16, 17:42:35	23.5	24.5	23.7	21.6	23.6	24.3	23.3	22.9	23.7	23.9	OPEN	OPEN	OPEN	OPEN	OPEN	OPEN
12-Jul-16, 17:47:35	23.5	24.8	23.7	22.7	23.9	24.6	23.3	23.0	23.9	24.3	OPEN	OPEN	OPEN	OPEN	OPEN	OPEN
12-Jul-16, 17:52:35	24.6	25.6	24.8	24.8	24.8	25.3	24.1	24.3	24.7	25.3	OPEN	OPEN	OPEN	OPEN	OPEN	OPEN
12-Jul-16, 17:57:35	25.3	25.6	25.6	25.5	25.4	25.7	24.6	25.0	25.1	25.6	OPEN	OPEN	OPEN	OPEN	OPEN	OPEN
12-Jul-16, 18:02:35	25.5	26.0	26.1	26.1	25.8	26.0	25.0	25.6	25.5	26.2	OPEN	OPEN	OPEN	OPEN	OPEN	OPEN
12-Jul-16, 18:07:35	26.2	26.2	26.4	26.5	26.1	26.3	25.3	26.0	25.7	26.4	OPEN	OPEN	OPEN	OPEN	OPEN	OPEN
Minimum	23.4	24.5	23.5	21.4	23.5	24.2	23.2	22.8	23.5	23.7						
Maximum					26.1											
Average	31.5	32.4	31.8	30.7	26.6	32.1	31.0	31.1	31.7	31.7	1999.5	1999.5	1999.5	1999.5	1999.5	1999.5
Difference	1976.4	1975.4	1976.4	1976.5	226.6	1975.7	1975.7	1977.1	1976.4	1976.2	0.1	0.1	0.1	0.1	0.1	0.1

Done By

Checked By

CHART VIEW REPORT:

